

DAILY RESEARCH, 21 JULI 2020

PT PROFINDO SEKURITAS INDONESIA

**GD PERMATA KUNINGAN LT 19
JL KUNINGAN MULIA KAV 9C GUNTUR SETIABUDI JAKARTA SELATAN 12980**

TELP +62 21 8378 0888

EMAIL : CUSTOMERSERVICE@PROFINDO.COM

WWW.PROFINDO.COM | PROCLICK.PROFINDO.COM

MARKET MOVERS



Bursa saham DOW ditutup kompak menguat setelah keberhasilan uji coba Vaksin Covid 19 oleh AstraZeneca dan Universitas Oxford. **DOW +0.03%, S&P +0.84%, NASDAQ +2.51%**

Bursa saham Eropa ditutup variatif dimana hasil pertemuan para Pemimpin Uni Eropa menemui jalan buntu dalam penyaluran stimulus senilai € 750 Billion yang dikhawatirkan akan mengganggu pemulihan ekonomi kawasan Eropa. **Indeks DAX +0.99%, FTSE -0.46%, CAC +0.47%**

Bursa Saham Asia dibuka menguat setelah uji coba 3 jenis vaksin menunjukkan hasil positif dan disetujuinya Stimulus Uni Eropa sebesar €1.8 triliun untuk pemulihan ekonomi dari covid 19. **Hang Seng -0.12%, KOSPI +1.12%, Nikkei +0.75%**

Harga minyak mentah dunia menguat setelah hasil uji coba vaksin AstraZeneca dan Universitas Oxford Inggris aman. Harga emas ditutup menguat setelah stimulus Uni Eropa menyetujui dana €1.8 triliun untuk penanggulangan Covid 19. **WTI +0.05%, Brent Oil +0.23%, Gold +0.04%.**

IHSG pada perdagangan hari ini diperkirakan akan **BULLISH** dengan Range pergerakan **5000-5100** dengan saham-saham yang dapat diperhatikan : **BBRI BWPT INAF SMGR MIKA DMAS**

MARET DATA

AMERIKA

DOW 30	26,680.87	+8.92	+0.03%
S&P 500	3,251.84	+27.11	+0.84%
NASDAQ	10,767.09	+263.90	+2.51%

EUROPE

DAX	13,046.92	+127.31	+0.99%
FTSE 100	6,261.52	-28.78	-0.46%
CAC 40	5,093.18	+23.76	+0.47%

ASIA

SHANGHAI	3,313.98	-0.16	-3.11%
HANGSENG	25,057.99	-31.18	-0.12%
SET	1,358.29	-1.29	-0.09%
KOSPI	2,222.91	+24.71	+1.12%
JCI	5,051.11	-28.48	-0.56%
NIKKEI	22,887.00	169.52	+0.75%
ASX	6,065.00	+63.40	+1.06%

COMMODITIES

GOLD	1,818.15	+0.75	+0.04%
WTI OIL	40.94	+0.02	+0.05%
BRENT OIL	43.33	+0.10	+0.23%
COAL	63.2	0	0%
PALM OIL	2756	+54	+2.00%
TINS	17,355.00	-5.00	-0.03%
NICKEL	13,235.00	+45.00	+0.34%

EVENT & ECONOMIC CALENDER

ECONOMIC CALENDER :

INDONESIA

200720 MOTORBIKE SALES (JUN)
240720 LOAN GROWTH (YoY) (JUN)

GLOBAL

200720 JAPAN TRADE BALANCE (JUN)
DEUCTH PPI (MoM) (JUN)
CHINA LOAN PRIME RATE (1Y)
210720 JAPAN INFLATION RATE (YoY) (JUN)
220720 US API CRUDE OIL STOCK
US EXISTING HOME SALES (JUN)
230720 KOREA GDP (Q2)
US JOBLESS CLAIMS
EURO CONSUMER CONFIDENCE (JUN)
240720 UK RETAIL SALES (MoM) (JUN)
EURO MARKIT PMI MANUFACTURING (JUL)
US MARKIT PMI MANUFACTURING (JUL)
US NEW HOME SALES (JUN)

CORPORATE ACTION :

DEVIDEN

200720 STTP RP 76.34 (CUM 2007, PAYMENT 1208)
DUTI RP 300 (CUM 2007, PAYMENT 1308)
210720 KEJU RP 80 (CUM 2107, PAYMENT 2807)
220720 ASBI RP 5.7 (CUM 2207, PAYMENT 1208)
230720 IPCM RP 9.8 (CUM 2307, PAYMENT 1408)
INDS RP 100 (CUM 2307, PAYMENT 1408)
INDF RP 278 (CUM 2307, PAYMENT 1408)
ICBP RP 215 (CUM 2307, PAYMENT 1208)
240720 LSIP RP 15 (CUM 2407, PAYMENT 1208)

RUPS

200720 NFCX MCAS ISAT AMAG
210720 TFAS NIKL FISH DIVA BUKK
220720 SUPR SOTS SHIP SAPX LPLI
230720 WINS VOKS KDSI BUMI BJTM ABDA
240720 UNVR SOCI SMSM RELI RANC PBSA NOBU ITIC INDX

IPO

RIGTH ISSUE

080720 BBKP (NEW 2: OLD 5) RP180 (TRADING PERIOD 1407-2707)

JAKARTA COMPOSITE INDEX



PREVIOUS 20 JULI 2020

CLOSING	5051.106 -0.561%
TRANSACTION	IDR 6.5 TRILLION
FOREIGN NETT	IDR 170 BIO (BUY)

PREDICTION 21 JULI 2020

BULLISH
RANGE 5030-5100

BOTTOM FISHING AREA
STOCHASTIC : NETRAL
MACD : HISTOGRAM POSITIF DAN NETRAL

TECHNICAL RECOMENDATION



**BBRI – PT BANK RAKYAT INDONESIA (PERSERO)
TBK**

CLOSING 20/7/2020 RP 3050 (-1.6%)

BUY

TARGET PRICE 3160

STOPLOSS < 3030

BOTTOM FISHING AREA

STOCHASTIC : OVERSOLD

MACD : HISTOGRAM NEGATIF DAN DOWNTREND

TECHNICAL RECOMENDATION



BWPT – PT EAGLE HIGH PLANTATIONS TBK

CLOSING 20/7/2020 RP 117 (+14.7%)

**SELL ON STRENGTH
TAKE PROFIT 142**

BREAK OUT TRIANGLE
STOCHASTIC : UPTREND
MACD : HISTOGRAM POSITIF DAN UPTREND

TECHNICAL RECOMENDATION



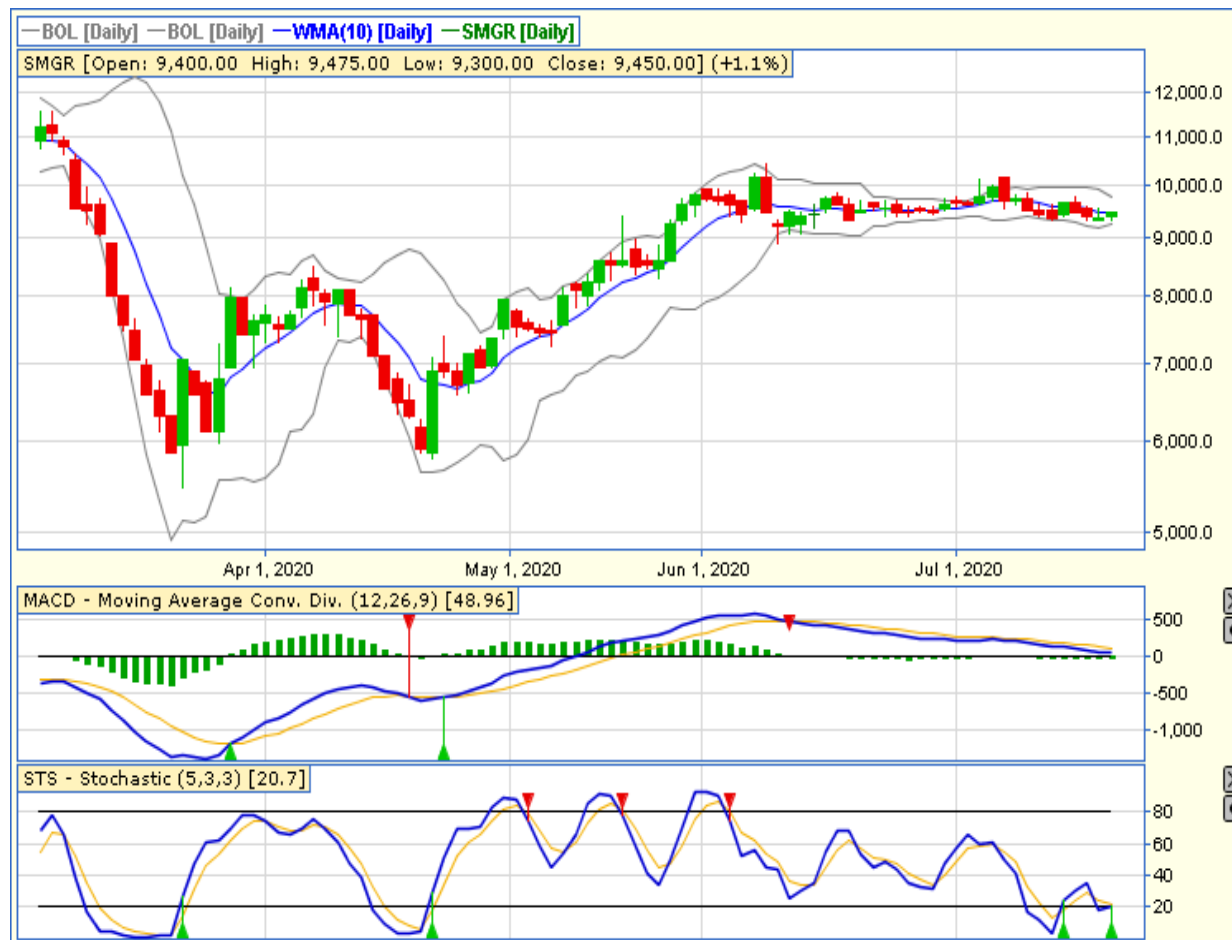
INAF – PT INDOFARMA TBK

CLOSING 20/7/2020 RP 1205 (+7.6%)

**SELL ON STRENGTH
TAKE PROFIT 1375**

BULL FLAG
STOCHASTIC : UPTREND
MACD : HISTOGRAM POSITIF DAN UPTREND

TECHNICAL RECOMENDATION



SMGR – PT SEMEN INDONESIA (PERSERO) TBK

CLOSING 20/7/2020 Rp 9450 (+1.1%)

BUY

TARGET PRICE 10150

STOPLOSS < 9300

HAMMER

STOCHASTIC : GOLDEN CROSS

MACD : HISTOGRAM NEGATIF MENGECIL DAN
LOWER AREA

TECHNICAL RECOMENDATION



MIKA – PT MITRA KELUARGA KARYASEHAT TBK

CLOSING 20/7/2020 RP 2320 (+1.8%)

BUY

TARGET PRICE 2480

STOPLOSS < 2290

BULLISH HARAMI

STOCHASTIC : GOLDEN CROSS

**MACD : HISTOGRAM NEGATIF MENGECIL DAN
NETRAL DI LOWER AREA**

TECHNICAL RECOMENDATION



DMAS – PT PURADELTA LESTARI TBK

CLOSING 20/7/2020 RP 212 (+0.3%)

BUY

TARGET PRICE 250

STOPLOSS < 200

BREAK OUT TRIANGLE

STOCHASTIC : UPTREND

MACD : HISTOGRAM POSITIF DAN UPTREND

RESEARCH TEAM



YULIANA

**RESEARCH ANALYST &
CORPORATE FINANCE**



DIMAS WP PRATAMA, CSA

TECHNICAL ANALYST

EQUITY CAPITAL MARKET TEAM



JESSIE JAMES

HEAD OF EQUITY SALES



PRASETYO NUGROHO

HEAD OF DEALING ROOM



GABRIELLA PRATIWY

HEAD OF ONLINE TRADING